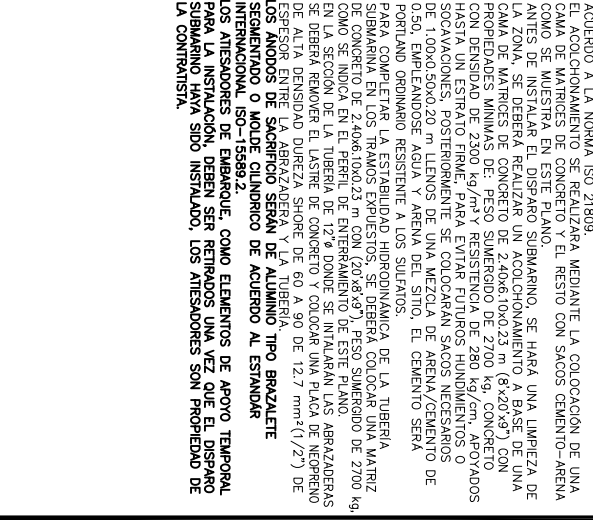
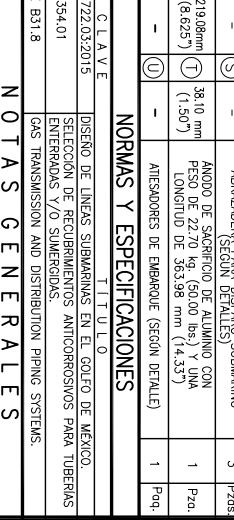
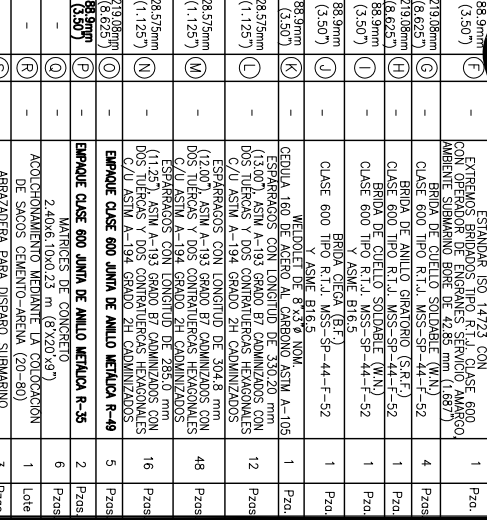
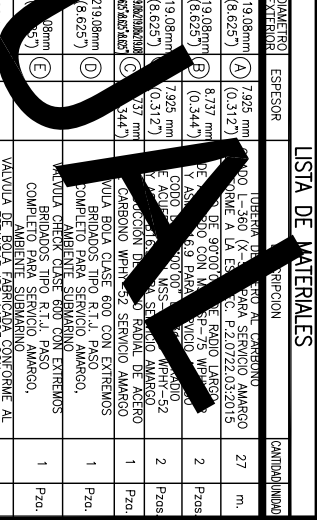


(F)	(3,50")	-	EXTREMOS BRIDADOS TIPO R.T.J. CLASE 6000 CON OPERADOR DE ENRIPIERAS SERVICIO AMARGO, AMBIENTE SUBMARINO BORE DE 42,85 mm (1,68")	1	P20
(G)	(3,1930mm (12,5625"))	-	BRIDA DE CUETO SOLDABLE (W.N.) CLASE 600 TIPO R.T.J. MSS-SP-44-F-52	4	P20S
(H)	(3,1800mm (12,5000"))	-	BRIDA DE ANILLO GRIOTARIO (S.R.F.) CLASE 600 TIPO R.T.J. MSS-SP-44-F-52	1	P20.



---